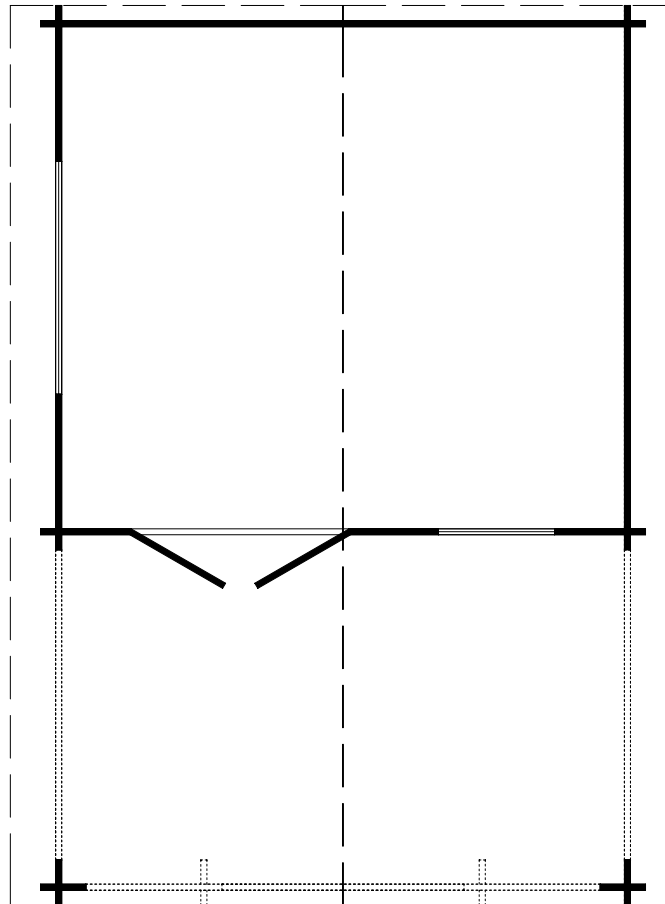


Techn. Data: Montana

Log length (W x D): 400 x 595 cm

Wall size(outside): 380 x 575 cm-Log thickness: 40 mm



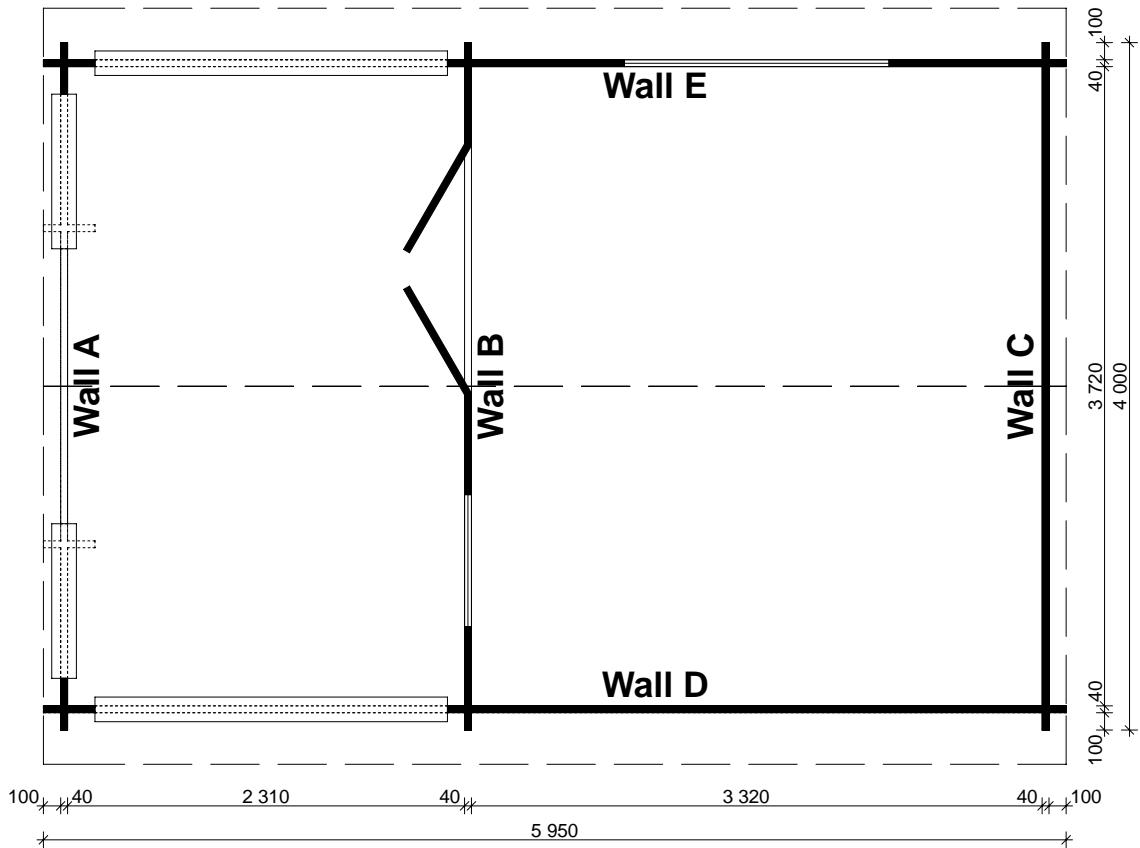
Note: All dimensions are approximate !

Specification Montana 40 mm / 400 x 595 cm

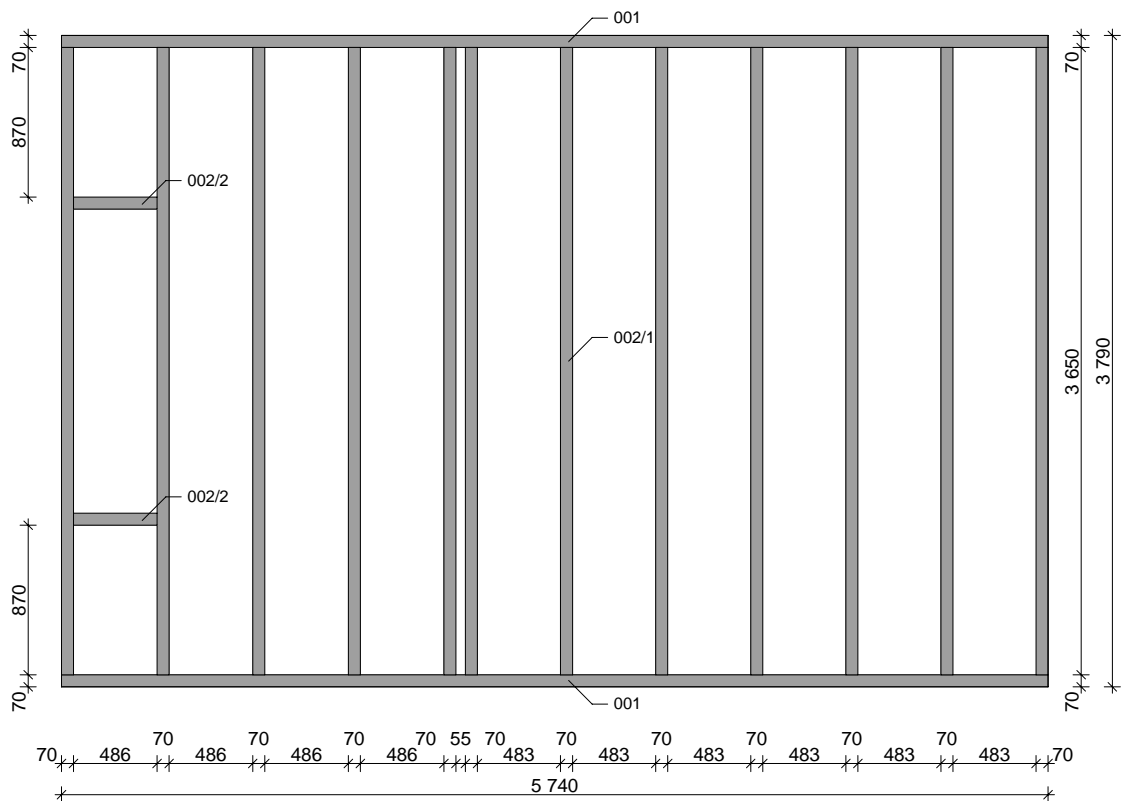
Nr.	Description	Profile mm	Length mm	Quantity
001	Foundation		5740	2
002			3650/486	12/2
003			1200/1200	1/1
004			600/1960	1/1
005			4000	1
006			300	2
007			4000	20
008			5950	10
009			3600	17
010			1200	6
011			1030	18
012			600	26
013			300	60
014			1960	8
015			590	9
016			300	6
017	Gable 		4000	3
018			5950	2(1+1)
019			5950	1
020			5950	4
021	Double door ca. 1425 x 1955mm - 40 mm			1
022	Double window ca. 1530 x 990mm - 40 mm			1
023	Single window ca. 765 x 990mm - 40 mm			1
024	Roof board		2280	108+2
025	Floor board		3316	34+1
026	Facia board		2320	4
027	Eave edging		2320	4
028	Roof edge reinforcement		2975	4
029	Roof edge reinforcement		2975	4
030	Diamond			2
031	Baseboard		ca. 14,1 m	
032	Storm braces		2150	6
033	Screws 4,0 x 40; 5,0 x 70			1 bag
034	Nails 2,2 x 50 ; 2,5 x 70			1 bag
035	Terrace board	21 x 95	2350/2310	17/20
036	Handrail	40 x 143	2050/910	2/2
037	Bolt M 8 x 70, nut, washer			18
038	Hitblock		300-400	3

Montana 40 mm - 400 x 595 cm

Wall plan

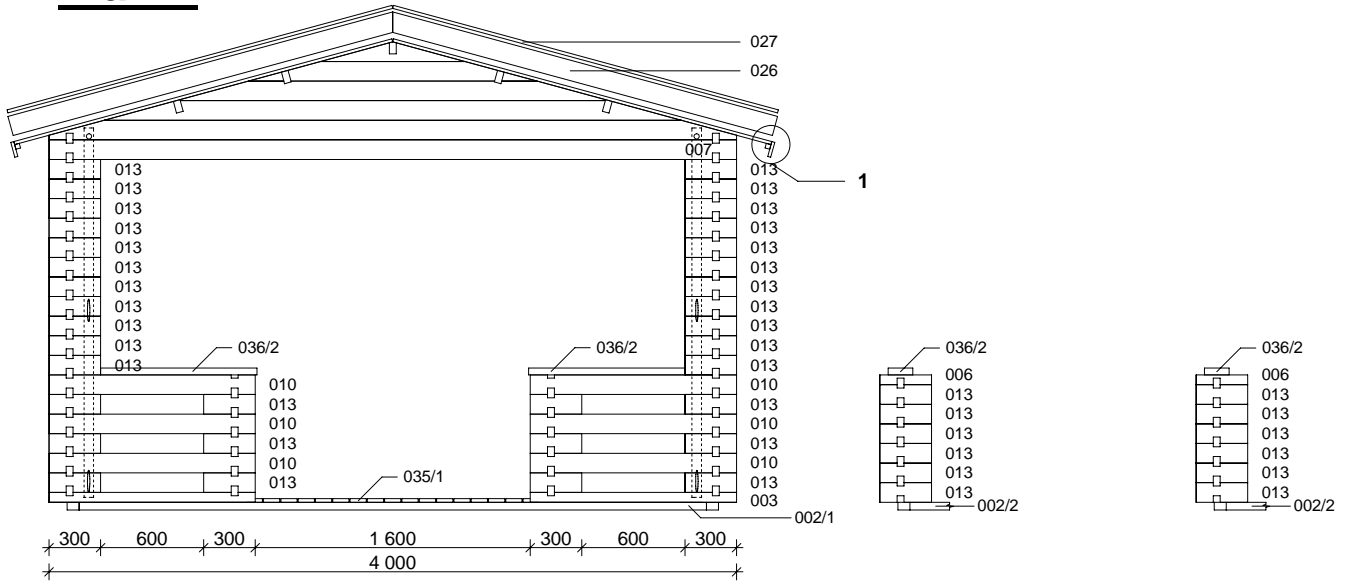


Foundation plan

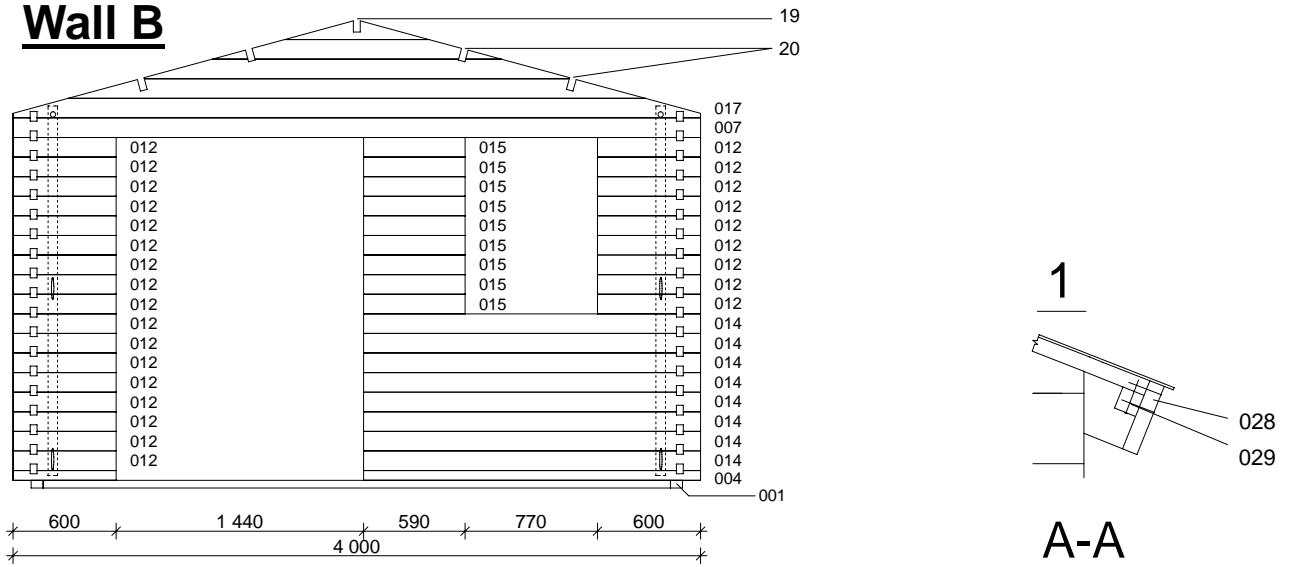


Montana 40 mm - 400 x 595 cm

Wall A

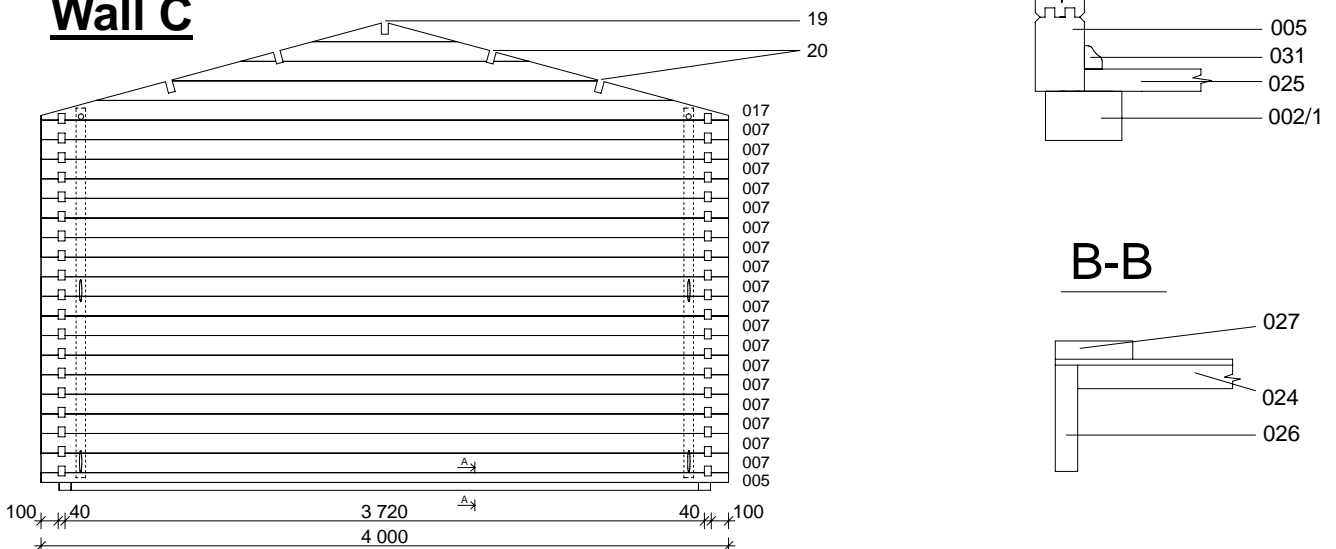


Wall B

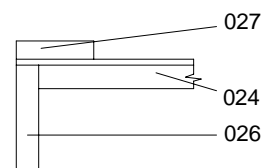


A-A

Wall C

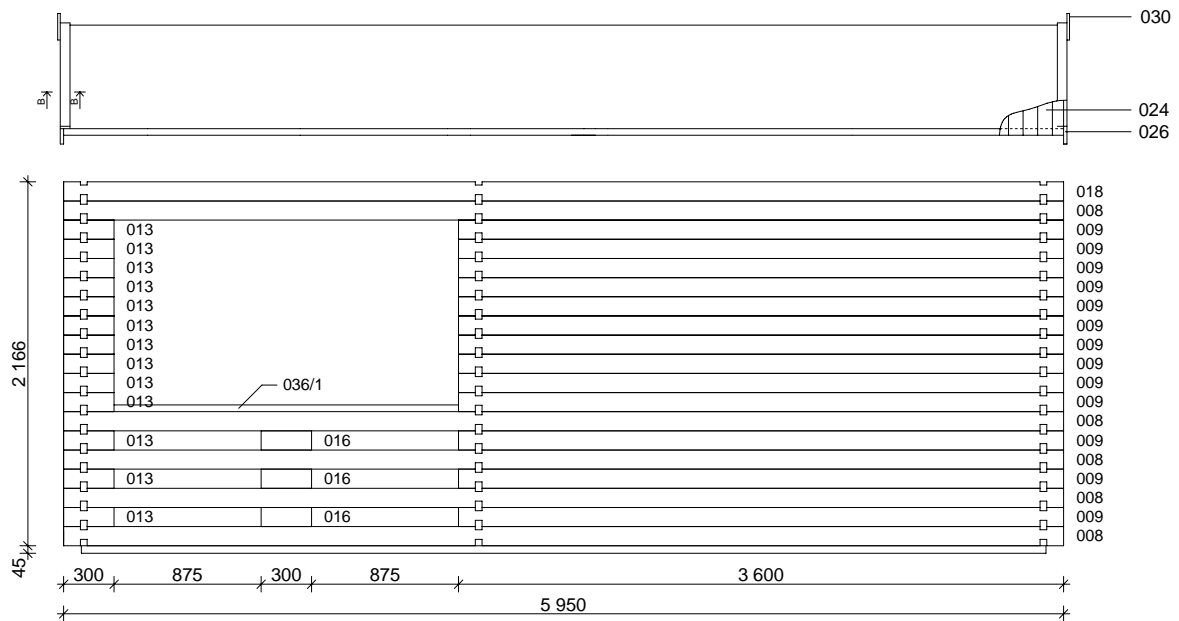


B-B

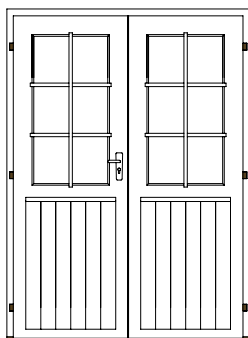
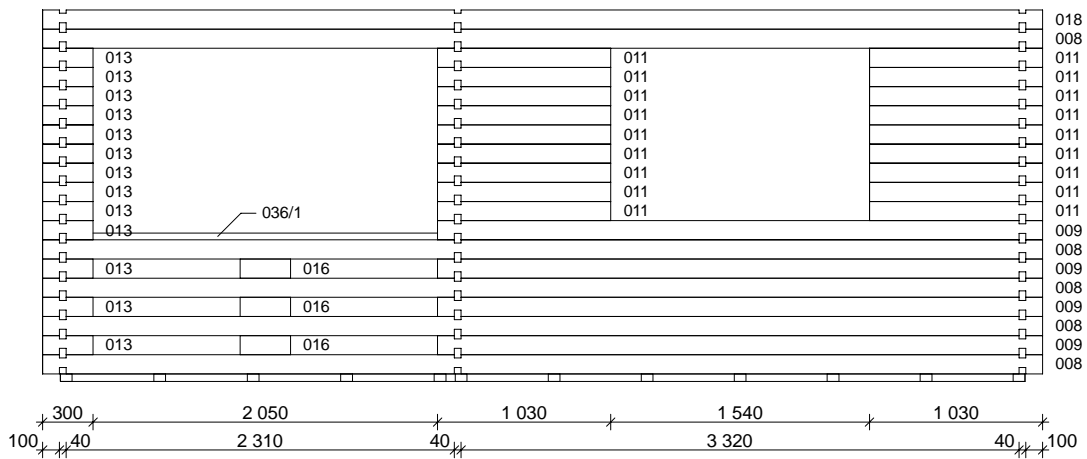


Montana 40 mm - 400 x 595 cm

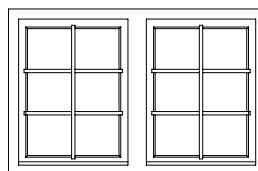
Wall D



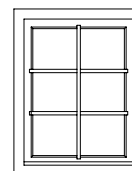
Wall E



NR. 021



NR. 022



NR. 023